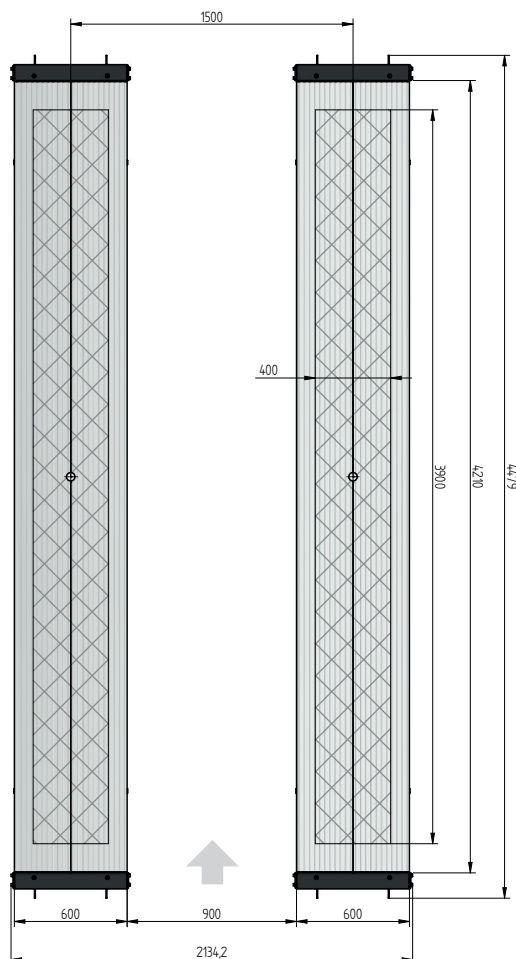
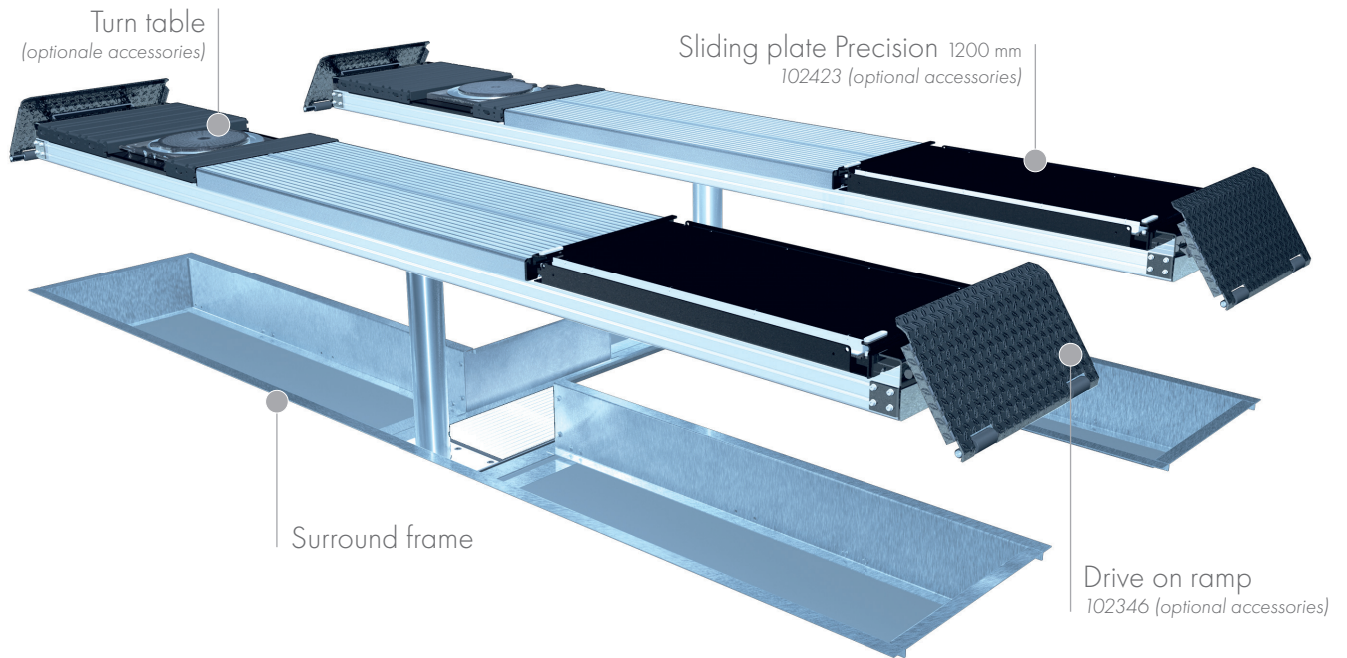


FLUSH MOUNTED



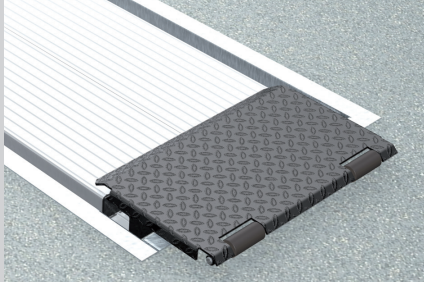
TECHNICAL DATA

capacity	3500 kg
platform length	4400 mm
platform height	180 mm
piston diameter	123 mm
piston distance	1500 mm
motor output	3,0 kW
power connector	400 V/16 A
cable length to control	11 m
lifting time	≈ 35 sec.
lowering time	≈ 35 sec.

Platform support Alu Track 2.35 with platform notches for turn tables and sliding plates	105238
Platform support Alu Track 2.35	102698
Installation cassettes STEEL 1500 mm	2030XX
Installation cassettes STEEL 1500 mm galvanized	2031XX
Lifting unit oil 3,5 t 1500 mm - K pre-assembled in installation cassette	110200
Lifting unit oil 3,5 t 1500 mm - H packed in wooden box	110201
Surround frame H 2-piston 4400 mm	102356

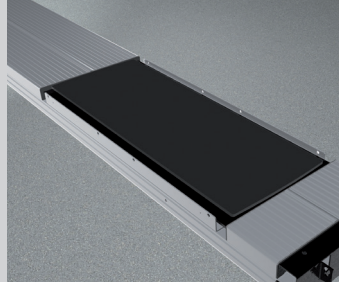
ALU TRACK 2.35

ACCESSORIES



Drive on ramp

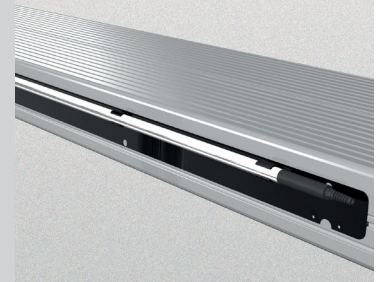
102346



Sliding plate

Precision 1200 mm

102423



Lighting

LED

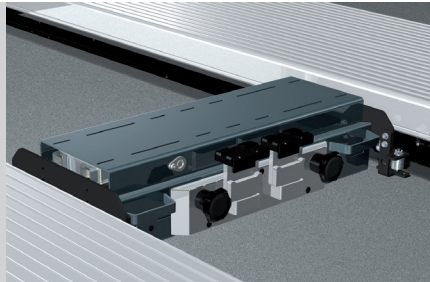
102394



Slide rail

4400 mm

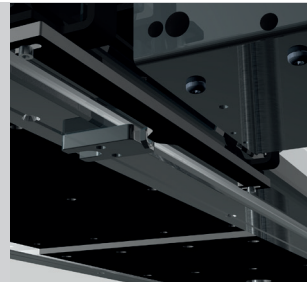
102374



Axle lifter 2600 kg

pneumatic, without slide rails

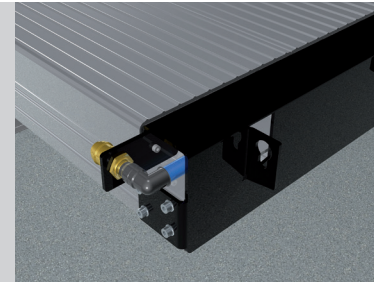
105063



Position sensor

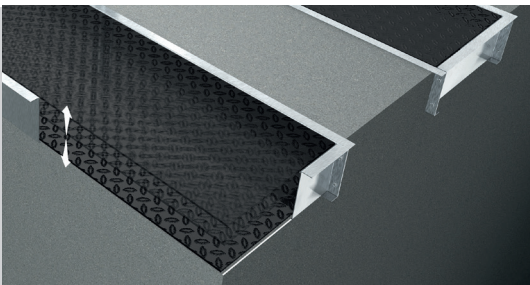
for axle lifter

102456



Compressed air supply

105617



Autom. floor levelling system

2-piston 4400 mm

102366

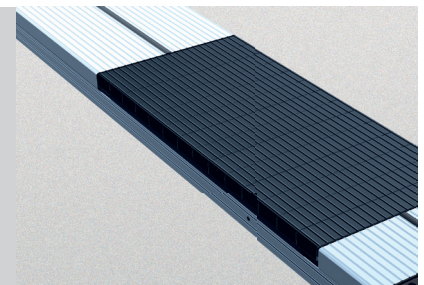


Wheel alignment supports

1350 mm 600 mm

102377

102381



Rubber elements 600 mm

50 mm 100 mm 200 mm

111677

111678

111679

Herrmann AG
Bahnhofstrasse 32
D-93483 Pöding

Phone: +49 (0)9461/91388 50
E-Mail: sales@herrmann-lifts.com



www.herrmann-lifts.com