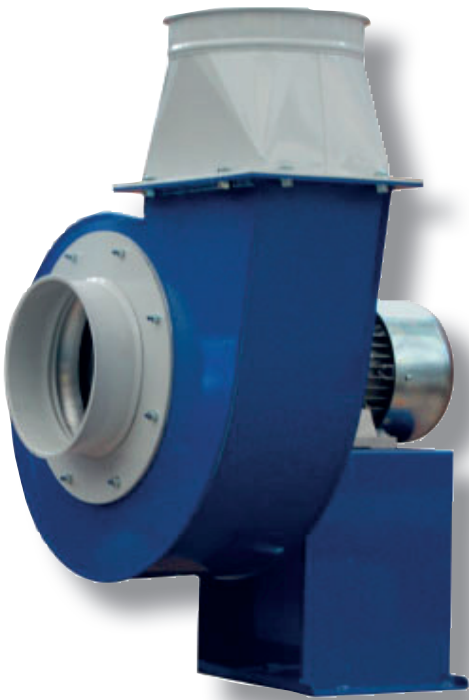


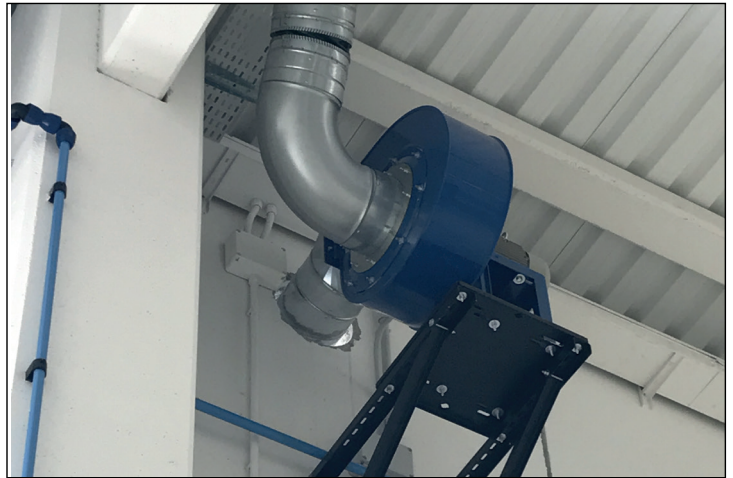
ELETTROASPIRATORI



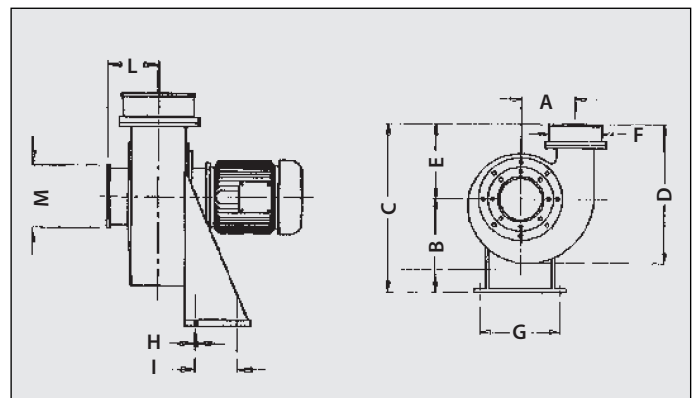
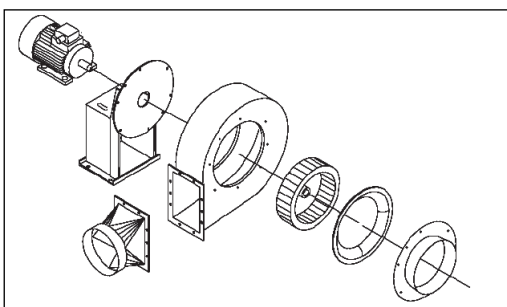
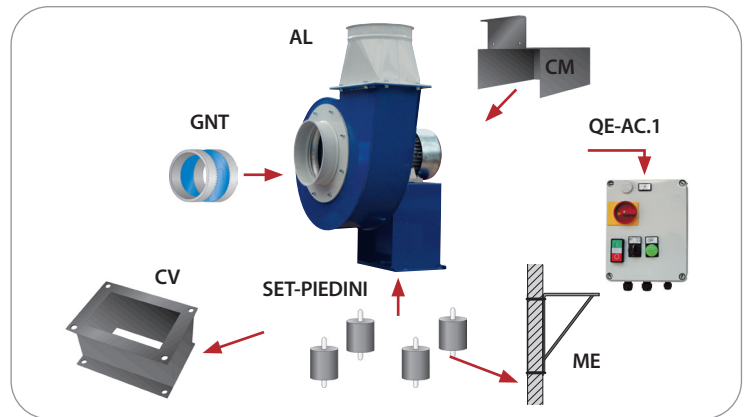
FANS
VENTILATEURS
VENTILATOREN
ELECTROASPIRADORES



- Elettroaspiratore in lamiera d'acciaio completo di flangie di entrata e uscita. Ventilatore orientabile adatto per portate medio alte, pressioni medie.
- Metal sheet steel fan complete with inlet and outlet flanges. Fan adjustable suitable for medium high, medium pressure.
- Electro-aspirateur en tôle d'acier avec brides d'entré et de sortie. Fan réglable adapté à haute, moyenne pression moyenne.
- Ventilator aus Stahlblech mit Druck und Sauganschlüssen. Fan verstellbar passend für mittel hoher, mittlerer Druck.
- Aspirador de acero con bocas de entrada y salida. Ventilador ajustable adecuado para medio-alto, de media presión.



230V-400V / 3phase / 50Hz





	AL 50	AL 100	AL 150	AL 200	AL 300	AL 400	AL 550	AL 750	AL 1000	AL 1500	AL 2000
Q [m³/h]	P _t [mmH ₂ O]										
100		85	120		140						
200		87	123		140						
300		88	124	124	140						
350	56	89	126	125	140						
400	58,5	90	128	126	140						
500	61	92	132	127	140						
600	67,5	93	137	128	140						
700	67,5	98	142	135	141						
800	63	102	145	136	142						
880	60	105	147	137	142						
900		107	150	137	142						
1000		110	153	138	144						
1100		112	157	140	147						
1200		113	162	143	150						
1300		113	167	147	152						
1500		112	172	158	162	270					
1700		107	172	167	170	275	275				
1800		106	170	173	177	287	272				
1900		105	167	178	182	286	270				
2100		100		188	190	285	268				
2160				187	193	284	264				
2400					194	281	260				
2520					188	279	259				
2700					185	275	258				
2880					184	271	257				
2950					183	267	256				
3000						264	255	325	340		
3240						260	252	322	338		
3400						254	250	320	336		
3600						247	245	317	334	360	
3800						238	240	315	332	370	
4000						232	230	310	330	387	
4100						220	220	305	327	381	385
4320						214	205	295	324	377	387
4680						195	195	285	322	374	388
4750						180	180	280	318	369	390
5000						170	168	275	312	361	393
5400						153	155	270	295	350	388
6000						81	145	250	275	346	382
6150							110	240	268	340	378
6500							90	225	255	333	368
6850								215	240	325	360
7000								200	230	320	355
7650								160	195	305	350
8000								132	175	285	341
8500								105	150	260	305
9000									118	240	300
9100									108	230	292
9500										210	285
10000										200	275
10800										160	220
11000										150	225
11500										118	200
12000											180
13000											125


Mod	A	B	C	D	E	F,M (.../C)	F,M (.../D)	G	H	I	L	Kg	HP	Kw	r.p.m.	dB
AL-50	92	190	468	492	278	150 R*	160 L*	195	8,5	65	120	12	0,5	0,37	2800	66
AL-100	151	283	601	486	318	180 R*	160 L*	265	8,5	95	125	20	1	0,75	2800	68
AL-150	151	283	601	486	318	180 R*	160 L*	265	8,5	95	125	22	1,5	1,1	2800	72
AL-200	196	374	756	624	382	200 R*	200 L*	250	8,5	130	135	32	2	1,5	2800	75
AL-300	196	374	756	624	382	200 R*	200 L*	250	8,5	130	135	35	3	2,2	2800	78
AL-400	286	500	965	835	465	250 R*	250 L*	289	12	197	187	77	4	3	2800	80
AL-550	286	500	965	835	465	250 R*	315 L*	289	12	197	187	82	5,5	4	2800	81
AL-750	321	560	1080	935	520	300 R*	355 L*	337	12	237	201	118	7,5	5,5	2800	84
AL-1000	321	560	1080	935	520	350 R*	355 L*	337	12	237	201	128	10	7,5	2800	85
AL-1500	355	600	1180	1052	580	380 R*	400 L*	395	14	337	217	203	15	11	2800	89
AL-2000	355	600	1180	1052	580	400 R*	400 L*	395	14	337	217	215	20	15	2800	89


* L= liscio/smooth/ lisse / glatt / liso
 *R= risvoltato/ folded/ plié/ gefaltet/ plegada




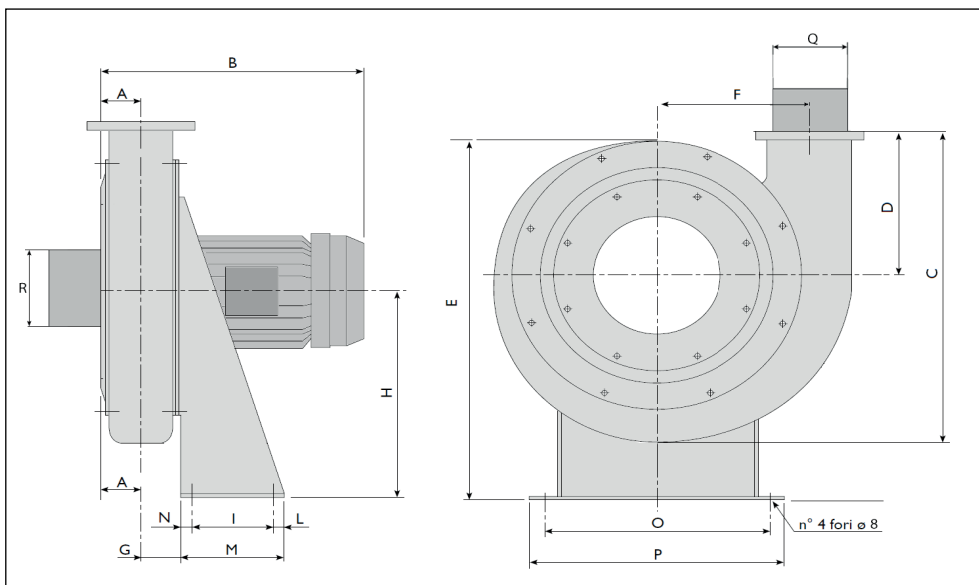
 Elettroaspiratore in fusione di alluminio completo di flange di entrata e uscita. Ventilatore orientabile, adatto per portate basse e pressioni medio/alte.

 Cast aluminum fan with inlet and outlet flanges. Fan adjustable, suitable for low flow rates and pressures medium / high.

 Electro-aspirateur en fusion d'aluminium avec brides à entrée et de sortie. Fan réglable, adapté aux débits et pressions moyennes / haute faible débit.

 Ventilator aus Aluminium einschl. Saug- und Druckstutzen. Fan einstellbar, geeignet für niedrige Durchflussraten und Drücke mittel / hoch.

 Aspirador en fundición de aluminio con bocas de entrada y salida. Ventilador ajustable, apto para caudales bajos y presiones medias / altas.

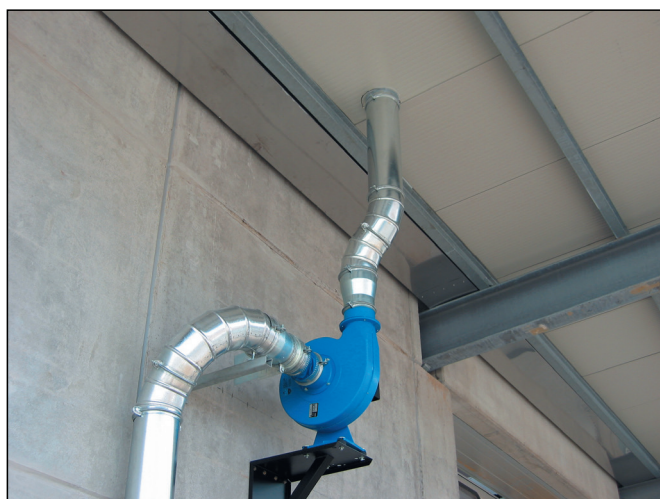
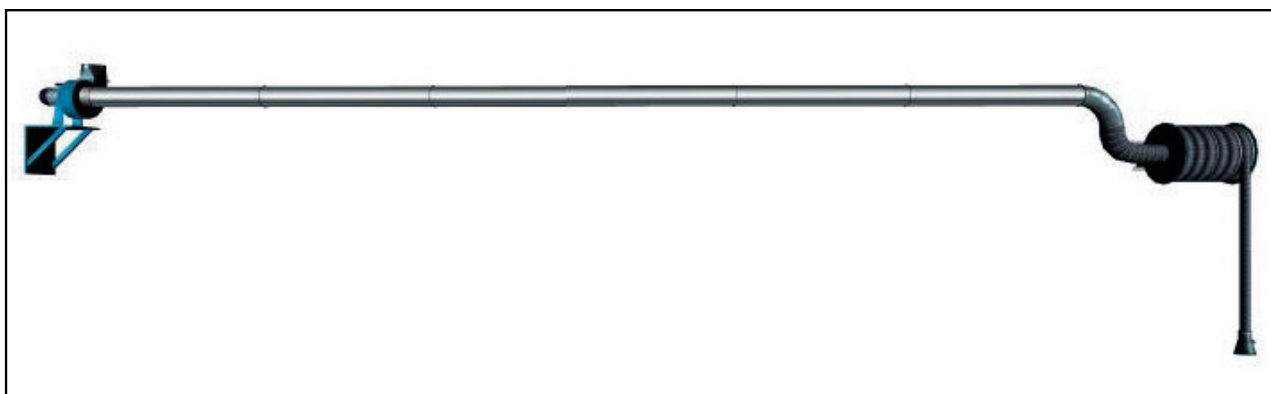


Mod	A (mm)	B (mm)	C (mm)	D (mm)	E (mm)	F (mm)	G (mm)	H (mm)	I (mm)	L (mm)	M (mm)	N (mm)	O (mm)	P (mm)	Q (mm) outlet	R (mm) inlet	Kg	HP	Kw	r.p.m.
AS-25/D	50	286	346	154	404	164	48	233	95	12,5	120	12,5	265	295	75 L*	120 L*	12,3	0,25	0,18	2800
AS-50/C	50	288	385	176	441	180	46	253	95	12,5	120	12,5	265	295	120 L*	150 R*	17,0	0,50	0,37	2800
AS-50/D	50	288	385	176	441	180	46	253	95	12,5	120	12,5	265	295	120 L*	160 L*	17,0	0,50	0,37	2800
AS-75/C	50	314	385	176	441	180	46	253	95	12,5	120	12,5	265	295	120 L*	150 R*	18,0	0,75	0,55	2800
AS-75/D	50	314	385	176	441	180	46	253	95	12,5	120	12,5	265	295	120 L*	160 L*	18,0	0,75	0,55	2800
AS-100/C	63	348	431	197	494	201	54	283	95	12,5	120	12,5	265	295	120 L*	200 R*	21,0	1	0,75	2800
AS-100/D	63	348	431	197	494	201	54	283	95	12,5	120	12,5	265	295	120 L*	200 L*	21,0	1	0,75	2800
AS-150/C	58	339	521	250	577	231	49	321	140	30	200	30	310	340	120 L*	200 R*	26,9	1,5	1,1	2800
AS-150/D	58	339	521	250	577	231	49	321	140	30	200	30	310	340	120 L*	200 L*	26,9	1,5	1,1	2800
AS-200/C	58	377	521	250	577	231	49	321	140	30	200	30	310	340	120 L*	200 R*	34,4	2	1,5	2800
AS-200/D	58	377	521	250	577	231	49	321	140	30	200	30	310	340	120 L*	200 L*	34,4	2	1,5	2800

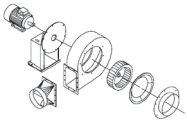
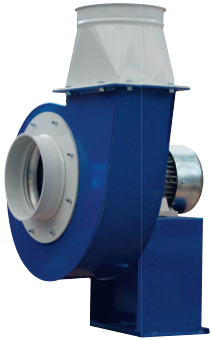
* L= liscio/smooth/ lisse / glatt / liso

*R= risvoltato/folded/plié/gefaltet/plegada

	AS25	AS50	AS75	AS100	AS150	AS200
Q [m ³ /h]	P _T [mm H ₂ O]					
100						
150	115					
200	114					
250	113	150				
300	110	146				
350	109	145	170			
400	108	142	164			
450	99	139	162	194		
500	94	137	160	194	242	
600	83	136	152	193	239	305
700	58	112	142	186	229	302
800		90	130	180	224	295
900			112	174	220	288
1000				165	210	280
1100				155	203	275
1200					192	270
1300						260
1400						254
1600						230



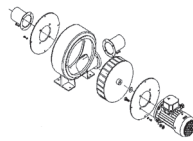
AL



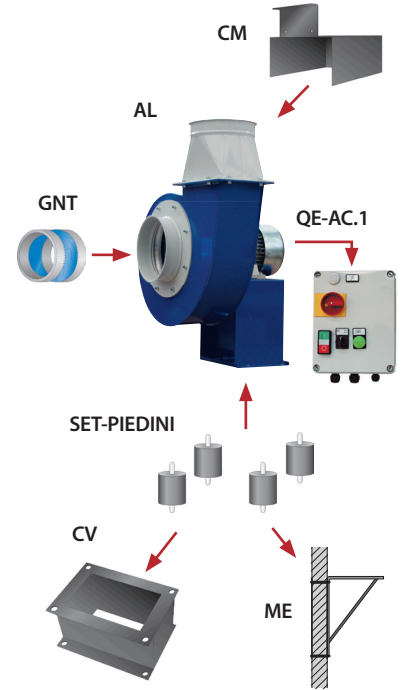
100/1300 Q[m³/h]
56-393 Pt[mmH₂O]
MED PRESS



AS



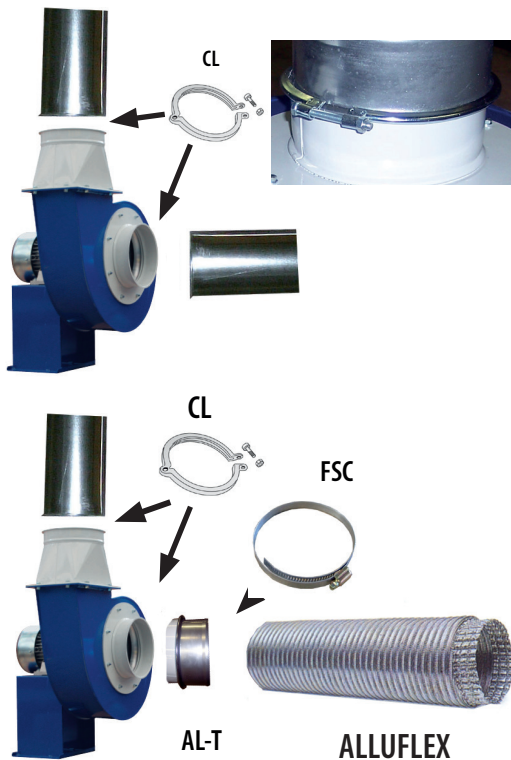
150/1600 Q[m³/h]
58/305 Pt[mmH₂O]
HIGH PRESS



AL-100/C

AL-100/D

ITALIAN STANDARD



EUROPEAN STANDARD



BOX INSONORIZZANTE - SOUNDPROOF BOX - BOÎTE POUR LA RÉDUCTION - SCHAHLDÄMMBOX FÜR VENTILATOR - BOX INSONORIZANTE








STANDARD ITALIANO

BOX-INS-AL100/150
BOX-INS-AL200/300
BOX-INS-AL400
BOX-INS-AL550
BOX-INS-AL750
BOX-INS-AL1000

EUROPEAN STANDARD






BOX-INS-AL100/150-D
BOX-INS-AL200/300-D
BOX-INS-AL400-D
BOX-INS-AL550-D
BOX-INS-AL750-D
BOX-INS-AL1000-D

-  Box insonorizzante per attento rumorosità degli aspiratori.
-  Soundproof box to reduce the fans noise.
-  Boîte pour la réduction du bruit acoustique des.
-  Schahldämmbox für Ventilator. Komplett mit Ansaug- und Ausblasöffnung für Innenund Aussenpositionierung.
-  Box insonorizante para la reducción del ruido del electroaspirador.

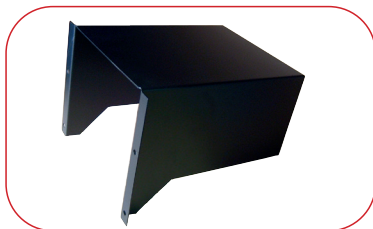
MENSOLA A PARETE - WALL BRACKET - SUPPORT MURALE - WANDHALTERUNG FÜR VENTILATOR - ENCIMERA A PARED








ME-50-300/P
ME-400-1000/P

-  Mensola a parete per sostegno aspiratore. ME-50-300/P è compreso di piedini.
-  Wall bracket to stand the fan. ME-50-300 / P is comprised of pins.
-  Support mural pour soutenir l'aspirateur. ME-50-300 / P est constitué de broches.
-  Wandhalterung für Ventilator. ME-50-300 / P wird von Stiften besteht.
-  Encimera a pared para el montaje de los aspiradores. ME-50-300 / P se compone de pasadores.

COPRI MOTORE - COVER FOR ELECTRIC MOTOR - COUVERCLE POUR MOTEUR - MOTORDECKEL - CUBREMOTOR








CM-0.5-0.75
CM-1-1.5
CM-2-3
CM-4-5.5
CM-7.5-10
CM-15-20

-  Copertura per motore elettrico degli aspiratore.
-  Cover for electric motor of the fan.
-  Couvercle pour moteur électrique de l'aspirateur.
-  Motordeckel.
-  Cubremotor para aspiradores.

PIEDINI ANTI VIBRANTI- ANTI-VIBRATION FEET - PIEDS ANTI-VIBRATION - SCHWINGUNGSDÄMPFER - GOMAS ANTIVIBRACIONES








SET-PIEDINI/P
SET-PIEDINI/M
SET-PIEDINI/G

-  Piedini antivibranti per collegamento aspiratore con relativo supporto.
-  Anti-vibration feet for connection with suction stand.
-  Pieds anti-vibration pour la connexion avec le support d'aspiration.
-  Schwingungsdämpfer.
-  Gomas antivibraciones para enlace del aspirador con el relativo soporte.

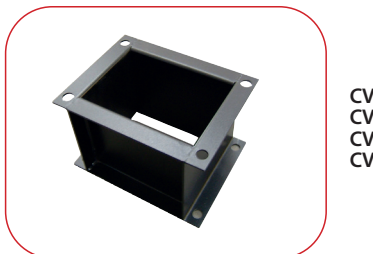
GIUNTO ANTI VIBRANTI- VIBRATION-PROOF - JOINT ANTI-VIBRATIONS - FLEXIBLE VERBINDUNG - JUNTA ANTIVIBRACIONES








GNT-100
GNT-120
GNT-150
GNT-180
GNT-200
GNT-220
GNT-250
GNT-280
GNT-300
GNT-320
GNT-350
GNT-380
GNT-400

-  Giunto antibrante con risvolti per collari.
-  Vibration-proof coupling with lip for collars.
-  Joint anti-vibrations pour collier.
-  Flexible Verbindung mit Rand.
-  Junta antivibraciones con solapa para collares.

CAVALLETTO A PAVIMENTO - STAND FOR EXHAUSTER - SUPPORT POUR SOUTENIR - VENTILATORGESTELL - CABALLETE PARA SOPORTE








CV-50-300
CV-400-550
CV-750-1000
CV-1500-2000

-  Cavalletto per supporto aspiratore.
-  Stand for exhauster fan.
-  Support pour soutenir l'aspirateur.
-  Ventilatorgestell.
-  Caballete para soporte del aspirador.

INTERRUPTORE TERMICO- SIMPLE SWITCH- INTERRUPTEUR SIMPLE - SCHALTER FÜR VENTILATOR - INTERRUPTOR SENCILLO



INT-0,35 HP
INT0,5HP
INT-0,75 HP
INT-1 HP
INT-1,5 HP
INT-2 HP
INT-3 HP






-  Interruttore semplice per start e stop aspiratore comprensivo di protezione termica (non comprende la bobina di sgancio).
-  Simple switch to start and stop the fan, including thermal protection (does not include the release coil).
-  Un interrupteur simple pour démarrer et arrêter l'aspirateur y compris la protection thermique (n'inclut pas la bobine de déclenchement).
-  EIN/AUS Schalter für Ventilator mit Motorschutz.
-  Interruptor sencillo con protección térmica completo.

QUADRO ELETTRICO - ELECTRICAL PANEL - TABLEAU ÉLECTRIQUE - CE-KONFORM SCHALTAFEL - CUADRO ELÉCTRICO



QE-AC1/0.75
QE-AC1/1.0
QE-AC1/1.5
QE-AC1/2.0
QE-AC1/3.0
QE-AC1/4.0
QE-AC1/5.5






QE-AC2/5.5
QE-AC2/7.5
QE-AC2/10
QE-AC2/15
QE-AC2/20

-  Quadro elettrico conforme alla normativa CE. Comprensivo di sezionatore e predisposto per un contatto esterno (es. utilizzabile per ON/OFF automatico dell'aspiratore. Quadri QE-AC2 avviamento stella triangolo per limitare i consumi in fase di spunto).
-  Electrical panel CE compliant, which includes disconnecter and prepared for an external contact (ex. It can be used for the automatic ON / OFF start of the fan). QE-AC2 panels has star delta start in order to limit energy consumption during take-off.
-  Tableau électrique conforme à règlements CEE. Inclusive d'un interrupteur et predisposé pour un contact externe (ex. utilisable pour un system ON/OFF automatiquement par l'aspirateur. Tableau QE-AC2 démarrage étoile-triangle pour réduire la consommation pendant la phase de allumage).
-  CE-konform Schalttafel mit Schalter und bereit für externe Signalen (z.B. für automatische EIN/AUS des Ventilators. QE-AC2 Schalttafel Stern-Dreieck-Betrieb).
-  Cuadro eléctrico a norma CE para aspirador centralizado con predisposición para comando manual y automático del señal remoto (ejemplo puede ser utilizado como ON/OFF del aspirador. Cuadros QEAC2 con arranque estrella /triangulo para bajar el consumo en fase de arranque).

QUADRO ELETTRICO INVERTER - ELECTRICAL PANEL INVERTER - TABLEAU ÉLECTRIQUE INVERTER - STEUERUNG INVERTER - CUADRO ELÉCTRICO INVERTER



QE-AC1/4.0-INV
QE-AC1/5.5-INV
QE-AC1/7.5-INV
QE-AC1/10-INV
QE-AC1/15-INV
QE-AC1/20-INV

-  Quadro elettrico con Inverter. Permette la regolazione automatica dell'aspiratore in funzione della richiesta. Riduce drasticamente i consumi elettrici.
-  Electrical panel with Inverter. It allows the fan automatic adjustment according to demand. It drastically reduces electrical costs.
-  Tableau électrique avec Inverter. Permet la régularisation automatique de l'aspirateur par fonction de la demande. Il réduit considérablement la consommation d'énergie.
-  Steuerung mit Inverter. Durch die automatische Unterdruckbemessung wird der Ventilatorleistung angepasst. Stromverbrauch wird entsprechend sinken.
-  Cuadro eléctrico para aspirador centralizado con inverter y sensor diferencial para regular la potencia del motor en relacion a la demanda. Reduce en manera importante los consumos electricos.






ELECTRIC PANEL



QUADRO ELETTRICO CON ANTENNA- ELECTRICAL PANEL RECEIVING - TABLEAU ÉLECTRIQUE L'ANTENNE - STEUERUNG WI-FI - CUADRO ELÈCTRICO WI-FI



QE-AC1T/1HP
QE-AC1T/1,5HP
QE-AC1T/2HP
QE-AC1T/3HP
QE-AC1T/4HP
QE-AC1T/5,5HP

-  Quadro elettrico con ricevitore compreso di telecomando a radiofrequenza per accendere e spegnere l'aspiratore dalla zona di lavoro.
-  Electrical panel with receiver including remote control radio frequency to turn on and turn off the vacuum cleaner from the working area.
-  Tableau électrique avec récepteur comprenant distance fréquence radio de contrôle pour allumer et éteindre l'aspirateur de la zone de travail.
-  Elektrische Schalttafel mit Empfänger mit Fernbedienung Radiofrequenz zum Ein- und Ausschalten des Staubsaugers aus dem Arbeitsbereich.
-  Cuadro eléctrico con receptor incluyendo a distancia por radiofrecuencia de control para encender y apagar la aspiradora de la zona de trabajo.






*EM-CA-TXQ504C2 - Telecomando a 2 tasti - 2-button remote control - 2-bouton de la télécommande - 2-Tasten-Fernbedienung - 2 botones de control remoto.

QUADRO ELETTRICO CON ANTENNA- ELECTRICAL PANEL RECEIVING - TABLEAU ÉLECTRIQUE L'ANTENNE - STEUERUNG WI-FI - CUADRO ELÈCTRICO WI-FI



QE-AC1/1.0/RX
QE-AC1/1.5/RX
QE-AC1/2.0/RX
QE-AC1/3.0/RX
QE-AC1/4.0/RX
QE-AC1/5.5/RX






QE-AC2/5.5/RX
QE-AC2/7.5/RX
QE-AC2/10/RX
QE-AC2/15/RX
QE-AC2/20/RX

-  Quadro elettrico con antenna ricevente per captare il segnale radio nelle applicazioni ON/OFF automatico dell'aspiratore con trasmettitore Wi-Fi (MICRO-TX, AM-TX, BL-A/TX). Quadri QE-AC2 avviamento stella triangolo per limitare i consumi in fase di spunto.
-  Electrical panel with receiving antenna to pick up the radio signal in automatic ON / OFF of the fan with Wi-Fi transmitter (MICRO-TX, AM-TX, BL-A/TX). QE-AC2 panels has star delta start in order to limit energy consumption during take-off.
-  Tableau électrique avec l'antenne de réception pour capter le signal radio dans les applications ON / OFF aspirateur automatique avec convertisseur Wi-Fi (MICRO-TX, AM-TX, BL-A/TX). Tableau QE-AC2 démarrage étoile-triangle pour réduire la consommation pendant la phase de allumage.
-  Steuerung mit Empfangsantenne fuer Wi-Fi Sender (MICRO-TX, AM-TX, BL-A/TX). QE-AC2 Schalttafel Stern-Dreieck-Betrieb.
-  Cuadro eléctrico con antena para recibir el señal radio ON/OFF del aspirador con transmissidor Wi-Fi (MICRO-TX, AM-TX, BL-A/TX). Cuadros QEAC2 con arranque estrella /triangulo para bajar el consumo en fase de arranque).

QUADRO ELETTRICO INVERTER - ELECTRICAL PANEL INVERTER - TABLEAU ÉLECTRIQUE INVERTER - STEUERUNG INVERTER - CUADRO ELÈCTRICO INVERTER









QE-AC1/4.0-INV/RX
QE-AC1/5.5-INV/RX
QE-AC1/7.5-INV/RX
QE-AC1/10-INV/RX
QE-AC1/15-INV/RX
QE-AC1/20-INV/RX

-  Quadro elettrico con Inverter e antenna ricevente per captare il segnale radio nelle applicazioni ON/OFF automatico dell'aspiratore con trasmettitore Wi-Fi (MICRO-TX, AM-TX, BL-A/TX).
-  Electrical panel with Inverter and receiving antenna to pick up the radio signal in automatic ON / OFF of the fan with Wi-Fi transmitter (MICRO-TX, AM-TX, BL-A/TX).
-  Tableau électrique avec Inverter et l'antenne de réception pour capter le signal radio dans les applications ON / OFF aspirateur automatique avec convertisseur Wi-Fi (MICRO-TX, AM-TX, BL-A/TX).
-  Steuerung mit Inverter und Empfangsantenne fuer Wi-Fi Sender (MICRO-TX, AM-TX, BL-A/TX).
-  Cuadro eléctrico con Inverter y antena para recibir el señal radio ON/OFF del aspirador con transmissidor Wi-Fi (MICRO-TX, AM-TX, BL-A/TX).

ASPIRATORI-FANS-VENTLATEURS-VENTILATOREN-ELECTROASPIRADORES

QUADRI ELETTRICI-TABLEAU ÉLECTRIQUE- PANELS-ZENTRALSTEUERUNGEN-CUADRO ELÉCTRICO

	CODE	AL (TRIFASE 400 V)*										AS (TRIFASE 400 V)*						
		50	100	150	200	300	400	550	750	1000	1500	2000	25	50	75	100	150	200
 INT	INT-0,35 HP																	
	INT-0,5 HP	.												.				
	INT-0,75 HP														.			
	INT-1 HP		.													.		
	INT-1,5 HP			.													.	
	INT-2 HP				.													.
	INT-3 HP					.												
 QE-AC	QE-AC1/0.75														.			
	QE-AC1/1.0		.													.		
	QE-AC1/1.5			.													.	
	QE-AC1/2.0				.													.
	QE-AC1/3.0					.												
	QE-AC1/4.0						.											
	QE-AC1/5.5							.										
	QE-AC2/5.5								.									
	QE-AC2/7.5									.								
	QE-AC2/10										.							
	QE-AC2/15											.						
QE-AC2/20												.						
 QE-AC1-INV	QE-AC1/4.0.INV						.											
	QE-AC1/5.5.INV							.										
	QE-AC1/7.5.INV								.									
	QE-AC1/10.INV									.								
	QE-AC1/15.INV										.							
	QE-AC1/20.INV											.						
 QE-AC1T	QE-AC1T/1HP		.													.		
	QE-AC1T/1,5HP			.													.	
	QE-AC1T/2HP				.													.
	QE-AC1T/3HP					.												
	QE-AC1T/4HP						.											
QE-AC1T/5,5HP							.											
 QE-AC/RX	QE-AC1/1.0/RX															.		
	QE-AC1/1.5/RX			.													.	
	QE-AC1/2.0/RX				.													.
	QE-AC1/3.0/RX					.												
	QE-AC1/4.0/RX						.											
	QE-AC1/5.5/RX							.										
	QE-AC2/5.5/RX								.									
	QE-AC2/7.5/RX									.								
	QE-AC2/10/RX										.							
	QE-AC2/15/RX											.						
QE-AC2/20/RX												.						
 QE-AC-INV/RX	QE-AC1/4.0.INV/RX						.											
	QE-AC1/5.5.INV/RX							.										
	QE-AC1/7.5.INV/RX								.									
	QE-AC1/10.INV/RX									.								
	QE-AC1/15.INV/RX										.							
QE-AC1/20.INV/RX											.							

* Disponibile versione monofase degli aspiratori- There are also mono-phase variants of the fans - Il existe également des variantes des aspirateurs monophasés - Ventilatoren mit Monophasen Motoren sind auf Anfrage Verfügbar - Hay a demanda con alimentacion monofasica