

STOREAGE_EURODUTO



SMART WALL 

ogni giorno più di
1.000.000 km di scaffali
tengono in ordine
i vostri prodotti

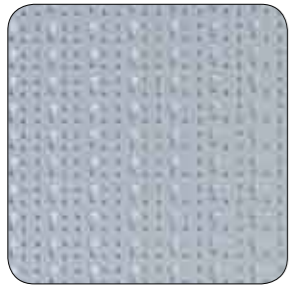
40°
1973 - 2011

every day more than a
1.000.000 km shelving
systems maintain your
products in order

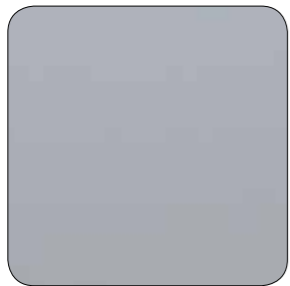
Elementi di struttura - Structure elements - Éléments de structure - Strukturenlemente



MONTANTE DOPPIA ASOLA
Double squared slot uprights
Montant avec double fente carré
Träger mit rechteckigen Doppelöse



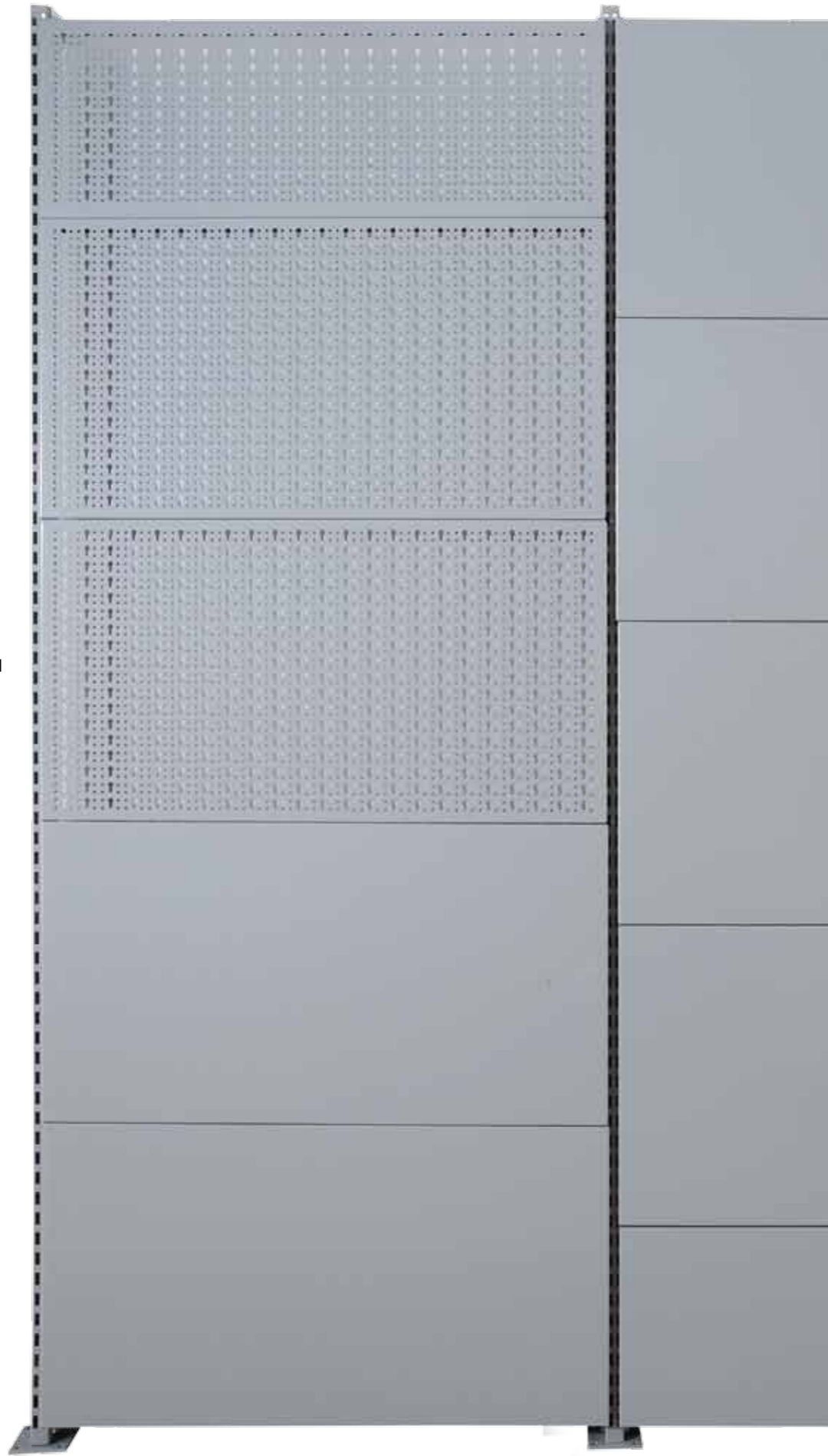
PANNELLI FORATI A MODULI
Modular punched panel
Panneau perforé modulaire
Modulares Lochpanel



PANNELLI LISCI A MODULI
Modular plain panel
Panneau modulaire pleine
Modulares Völligspanel

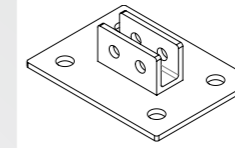


PIEDE SOSTEGNO
Base plate
Plaque de base
Grundplatte



MONTANTE DOPPIA ASOLA
Double squared slot uprights
Montant avec double fente carré
Träger mit rechteckigen Doppelöse

Cod.	↔	↙	↕
140103	-	-	2300



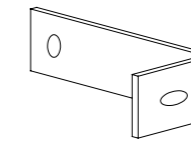
PIEDE SOSTEGNO
Base plate
Plaque de base
Grundplatte

Cod.	↔	↙	↕
140113/nr	90	4	90



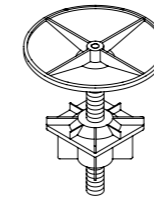
TASSELLI AD ESPANSIONE
Expansion anchors
Chevilles à expansion
Spreitzdübel

Cod.	↔	↙	↕
730030/nr	80	-	-
730010/nr	60	-	-



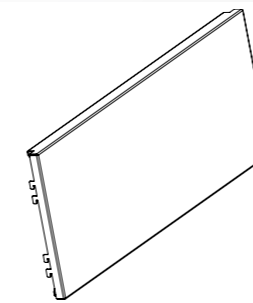
DISTANZIATORE A MURO
Wall spacer
Entretoise à mur
Wandabstand

Cod.	↔	↙	↕
XA088V/nr	100	5	50



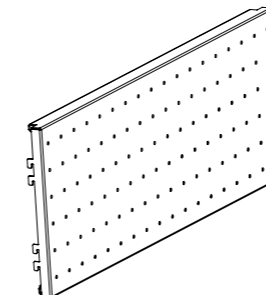
TAPPO A SOFFITTO MONTANTE MONOFRONTALE
Ceiling ties one sided uprights
Vérin d'ancrage au plafond montant monofrontal
Deckenverankerung - einseitige Träger

Cod.	↔	↙	↕
111034/nr	85	-	110
111094/nr	85	-	210



PANNELLI LISCI A MODULI
Modular plain panel
Panneau modulaire pleine
Modulares Völligspanel

Cod.	↔	↙	↕
140133/nr	915	15	318
140143/nr	915	15	510



PANNELLI FORATI A MODULI
Modular punched panel
Panneau perforé modulaire
Modulares Lochpanel

Cod.	↔	↙	↕
140153/nr	915	15	318
140163/nr	915	15	510



ARMADIO AD AGGANCIO

con ante in lamiera e serratura

Hanging cabinet complete with locking system, two doors

Etagère suspendue en metal perforé avec deux volets et fermeture

Verschließbarer Schrank zum einhacken mit zwei Türen

Cod.	↔	↙	↕	Kg
140173	904	392	850	34,39



PIANO TV

Shelf TV - Tablette TV - Regal TV

Cod.	↔	↙	↕	Kg
140193	925	288	30	3,35
140273	925	408	30	5,14



ARMADIETTO PORTAUTENSILI AD AGGANCIO

in lamiera forata con due ante e serratura

Hanging punched steel cabinet complete with two lockable doors

Etagère suspendue avec deux volets et fermeture

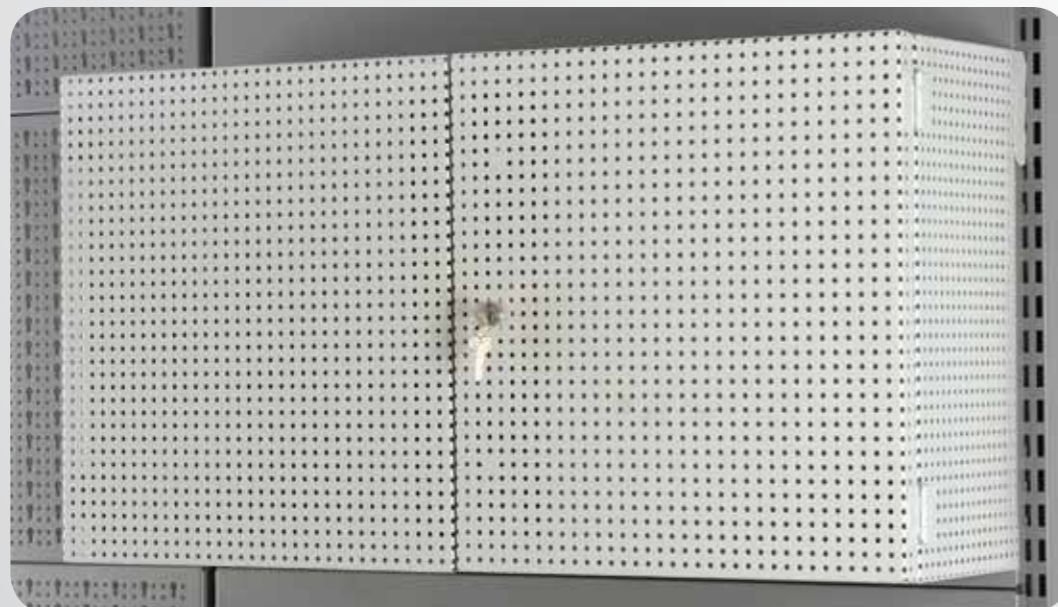
Verschließbarer Lochpanelschrank zum einhacken mit zwei Türen

Cod.	↔	↙	↕	Kg
140183	910	255	475	16,50

PIANO PCV

Shelf PCV - Tablette PCV - Regal PCV

Cod.	↔	↙	↕	Kg
140203	930	280	-	3,21



SMART **WALL**



SMART **WALL**



PIANO L
Shelf L - Tablette L - Regal L

Cod.	↔	↙	↕	Kg
140213	925	288	30	3,35



PIANO P
Shelf P - Tablette P - Regal P

Cod.	↔	↙	↕	Kg
140233	905	288	130	10,36
140283	905	408	130	13,47



PIANO PL
Shelf PL - Tablette PL - Regal PL

Cod.	↔	↙	↕	Kg
140223	905	288	130	10,36
140293	905	408	130	13,40

STAFFA PORTA PC
PC screen support - Support ecran PC - PC Bildschirmhalterung

Cod.
140243



SMART **WALL**



SMART **WALL**



PORTARIVISTE

Portariviste - porte-revues - Magazine rack - Zeitschriftenständer

Cod.	↔	↙	↕	Kg
140253	400	11	220	4,00

BANCO DA LAVORO

Workbench - Etabli - Arbeitsbank

Cod.	↔	↙	↕	Kg
140263	905	45	min. 700	17,20



GANCIO DOPPIO

Double hook - Crochet double- Doppelhaken

Cod.	↔	↙	↕	Kg
210060/nr	100	-	-	0,03
210061/nr	150	-	-	0,03
210026/nr	200	-	-	0,04

GANCIO DRITTO

Straight hook - Crochet droit - Gerader Haken

Cod.	↔	↙	↕	Kg
210021/nr	50	-	-	0,01
210061/nr	100	-	-	0,02
210026/nr	150	-	-	0,02
210026/nr	200	-	-	0,02

GANCIO ROTONDO

Round hook - Crochet rond - Rundhaken

Cod.	↔	↙	↕	Kg
210025/nr	50	-	-	0,02

